

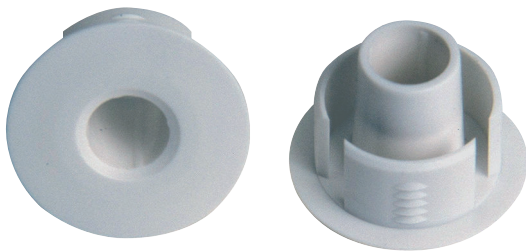
EG1 flush mounting housing

www.boschsecurity.com



BOSCH

Invented for life



For flush mounting the magnetic contact in ferromagnetic materials, head-on installation. The EG1 flush mounting housing is suitable for the following VdS Class B built-in magnetic contacts.

Ordering information

EG1 flush mounting housing

For flush mounting the magnetic contact in ferromagnetic materials, head-on installation
Order number **4998138931**
